

# Our Story

## Our Mission

Connect our Service Users to the community by helping them live a life with No Limits

## Our Vision

To enrich the lives of our Service Users and help them reach every ounce of their potential

## Our Purpose

To bring happiness to people living with a learning disability



## Bayleys Story

My name is Bayley and I am the founder of No Limits.

I have lived in the UK for the past 3 years where I came from Australia to take up a contract playing professional rugby.

Rugby has opened a lot of doors for me. Lots of travel, met some friends

for life and played against some of the world's best players to name a few highlights. But the best thing rugby has given me was introducing me to support work and supporting people with disabilities. This quickly went from a job to my passion.

From getting team mates jobs as support workers and connecting people I supported to the networks rugby had to offer I started to realise and see first hand how this concept can positively benefit all people in the community. Fast forward 8 years to now, I believe it was time to use my passion and experience to create No Limits and an inclusive world.



## Cory's story

My name is Cory, I was born and raised in Sheffield. I've been a professional rugby player since the age of 18 and this has given me lots of amazing opportunities to live in different parts of the country and visit many different parts of the world.

The drive, discipline and resilience it takes to be a professional athlete are some of the qualities that I believe we can pass over to the people we support, but most importantly a big smile and lots of fun.



I have a young son with one of the rarest chromosomal syndrome in the world. This affects him both physically and developmentally, this is what ignited my passion for supporting people with disabilities. I want to grow the company as big as possible in Sheffield and create as many opportunities as possible for people with disabilities to achieve their dreams and do things that they never believed were possible. The reason I am so passionate about this is because I would like my son as he gets older to have all these opportunities and support.

## Who are we?

No Limits is a disability support service, specialising in community access. We connect you with young, energetic support workers. Some of whom are professional athletes.



## Why Athletes?

We believe the dedication it has to be a professional in sport is exactly how we want to provide our support. Professional, enthusiastic and always pushing to reach our potential. We believe in the power of connecting our members through sports and the positive impacts it has on our service users in the community.





## Our Services

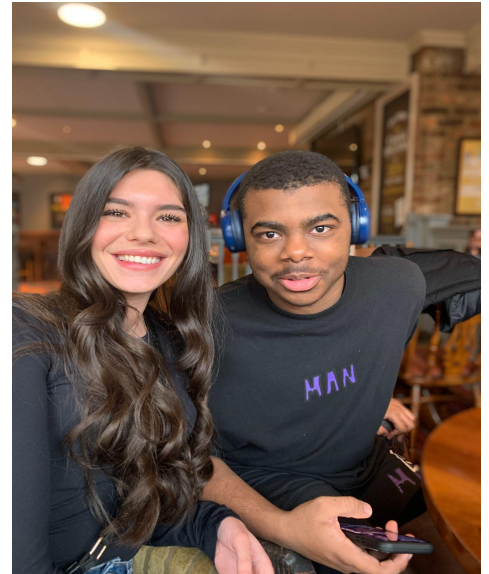
### Who do we support?

No Limits supports anyone living with a learning disability, Children and Adults, servicing Kirklees, Leeds, Wakefield and Sheffield.

Please note that No Limits can not offer support with administering medication or personal care.

### 1:1 and Group Community Support

This will look different for each service user we support with our main focus being promoting independence, being active and most of all.. Having fun! All support will take place in the community where our support will be tailored to our service users needs and goals, helping our service users to reach every ounce of their potential.



## How does it work?

After initial contact, we have a quick and easy process to get your support started!

### Step 1

Complete our online sign up form (this can be provided when requested) or details can be taken down over a phone call or email with one of our team members.

### Step 2

One of our friendly team members will be in contact with you to organise a face to face meeting - this will be where we would come out to meet you to discuss support in depth, your needs, goals and what you are looking for from our support.

### Step 3

When support is confirmed, funding is finalised and support hours are in place, No Limits will then put your personal plan together along with your current support plans in place and you will be required to sign a couple of simple forms.

### Step 4

Connect you with one of our amazing support workers and begin support!



## Our Pricing

No Limits currently works off a tier system which is determined by the individual's needs and level of support required. This will be discussed and identified on initial consultation with the family directly or social worker.

Payments will be invoiced on the last week of each month, and can be made via direct payments, directly from your local council or self/privately funded.

### Our Tier System

Low	£18.88 per hour
Medium	£22.00 per hour
High	£26 per hour
Mileage	£0.40p per mile
Additional costs	Individual to cover cost of any activity, own food and drink

Get in touch with us today!

For any inquiries regarding support please don't hesitate to contact us!

Kirklees, Leeds, Wakefield

Phone	07554984442
Email	info@nolimits1.uk

Sheffield, Derbyshire

Phone	07867305466
Email	coryaston@nolimits1.uk

Give us a follow: nlimits\_



Here at No Limits happiness is the key to everything we do... one smile at a time!

